

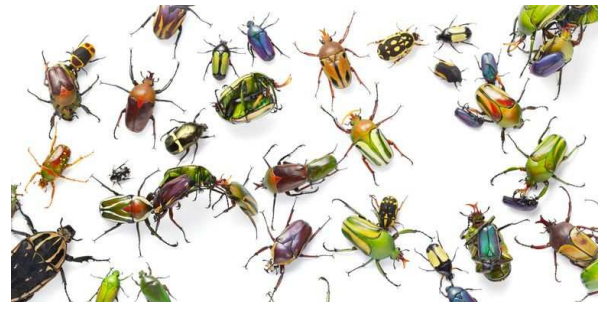
L.O. To use a key to identify invertebrates.

Read the PowerPoint linked on the home learning page, and then follow the instructions below:

1) As part of your one-hour daily exercise, or in your garden, go for walk and search for invertebrates (insects/bugs). Draw any invertebrates you find, identify the features and decide the name of the invertebrate.

2) Record your results in the tally chart below and create a bar chart to show how many of each invertebrate you have found.

3) When you have finished, please email your work to our email: [dh.y4+homelearning@perryhallmat.co.uk](mailto:dh.y4+homelearning@perryhallmat.co.uk)

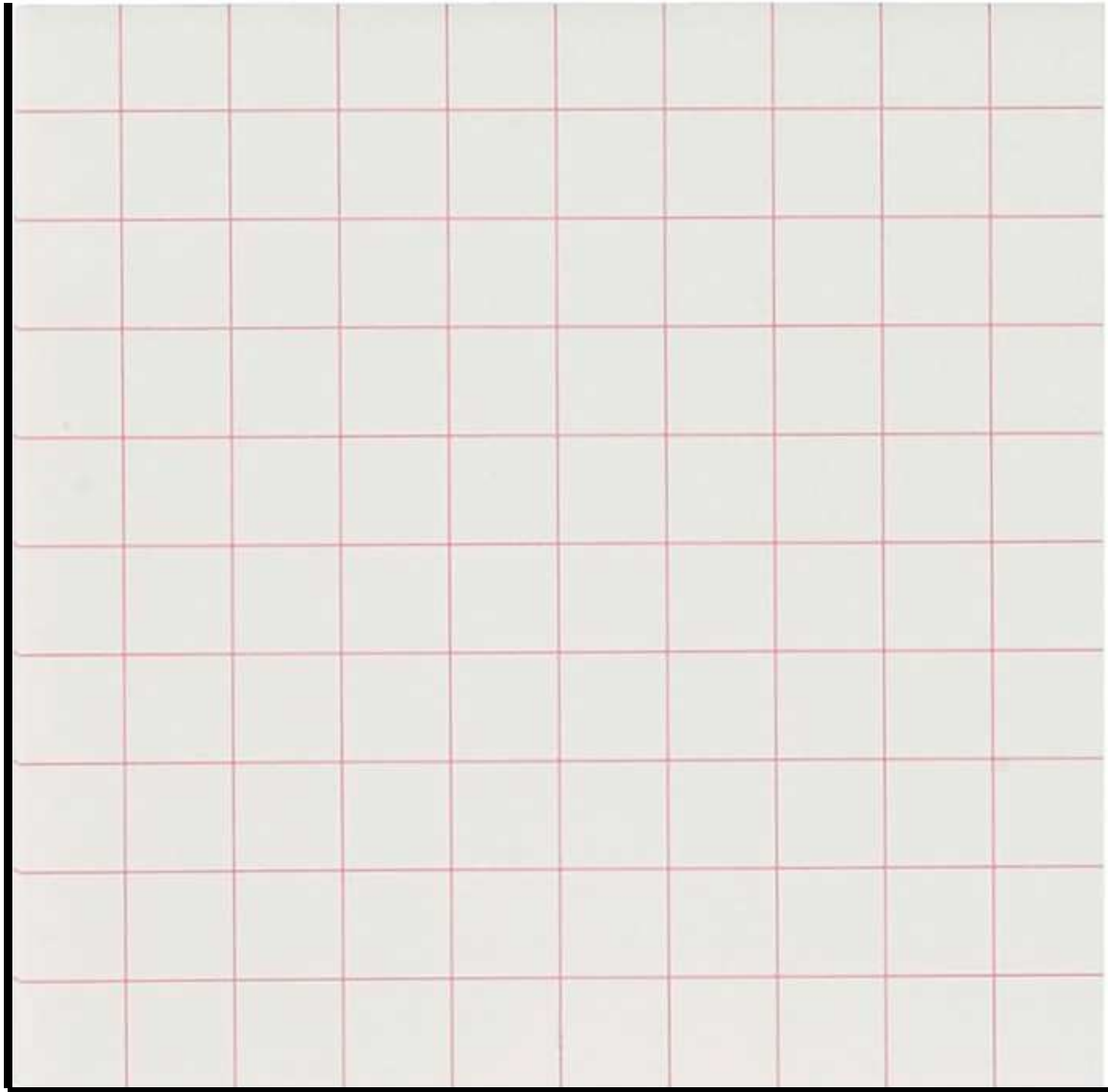


Tally Chart – Create a tally chart for your results from the invertebrate hunt.

Invertebrate	Tally
beetle	
ant	
caterpillar	
spider	
slug	
snail	
worm	
woodlouse	

Bar Chart – Create a bar chart using your information from the tally chart.

---



---