

Summer Term Week 9

Year 3

Mathematics

Well done year 3 for putting in super effort on your home learning last week. This week, our focus in maths is going to be TIME.

Look at a calendar and see how many months we have in a year.
How many days are there in May?
How many days are there June?
What is different about February?



Monday – Today you will complete some activities on months and years. Have a go at the activities below:

Use the numbers to fill in the gaps in the sentences.

There are ____ days in a year.
There are ____ months in a year.
There are ____ days in a leap year.
There are ____ days in a week.
Leap years happen every ____ years.

7 365
4
366 12

Put these dates in order from earliest to latest in a year.

3rd March 2nd March January 31st 1st December

Earliest Latest

4 children describe their birthdays.

Mo: My birthday is the first day of the second month.
Teddy: I was born on the 15th of June.
Eva: I was born on the last day of the year!
Dora: I was born two days before Mo.

Can you work out their birthdays and order them from earliest to latest in the year?

Whitney asks Rosie and Jack a question.

Some months have 31 days, some months have 30 days. How many months have 28 days?
Only February has 28 days.
Rosie: Every month has 28 days.
Jack

Who do you agree with? Explain your thinking.

Tuesday – Today we will be focusing on hours in a day. Have a go at the activities below:

Fill in the gaps in the sentence stems.

There are ____ days in a whole week.
There are ____ days in a school week.
There are ____ hours in a day.
There are ____ hours in a school day.

Put the times/events into the correct place on the diagram.

Morning	Afternoon	Evening	Night
Breakfast	Midnight	Midday	Go to school
Supper	Bedtime	Assembly	Brushing teeth

Complete the statements.

1 day = 24 hours ____ days = 120 hours
2 days = ____ hours ____ days = 60 hours
____ days = 240 hours 20 days = ____ hours



I get up at 7 o'clock in the morning and go to bed at 7 o'clock at night. This means I have been awake for a full day.

Do you agree with Mo?
Explain your answer.

Su	Mo	Tu	We	Th	Fr	Sa
	1	2	3	4	5	6
7	8	9	10	11	12	13
14	15	16	17	18	19	20
21	22	23	24	25	26	27
28	29	30	31			

In this month, there are no school holidays.

In this month we have to come to school for 31 days.



Do you agree with Teddy?
Explain your thinking.
Which month could it be?

Wednesday – Now have a go at the activities below on telling the time:

What time is shown on each clock?

_____ minutes past _____ minutes to _____

Draw the hands on the clock to show the time:

25 minutes to 6



The clock shows ten minutes to 3

Dora

The hour hand is not quite pointing to the 3, so it must be ten to 2

Amir

Who do you agree with?
Explain your thinking.

This clock has lost its minute hand.

What time could it be?
Justify your answer.

Thursday – Let's have another go at some activities on telling the time:

Draw the hands on the clock from the following times.

Four minutes to 4 24 minutes to 8 24 minutes past 8

Dora is telling the time from an analogue clock.

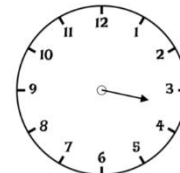
The hour hand is pointing to XI
the minute hand is pointing to XII

What time is it?

This clock has lost its hour hand.
What time could it be?



This clock has lost its minute hand.
What time could it be?



Friday – Today we are going to focus on a.m. and p.m. time:

Sort the times from latest to earliest.

5:30 p.m. 9:45 a.m. 9:45 p.m. 10:23 a.m.
7:31 a.m. 10:13 p.m. 8:30 a.m. 6:32 a.m.
12:24 a.m. 8:55 p.m. 2:11 a.m. 7:40 a.m.

Show the times on both analogue and digital clocks.

- Guided reading at 10:00 a.m.
- Home time at 3:30 p.m.
- Lunchtime at 12:00 p.m.



The board shows the times of trains arriving and leaving the train station.

	Arrives	Leaves
London	5:50 a.m.	6:00 a.m.
Edinburgh	8:00 a.m.	8:20 a.m.
Manchester	2:33 p.m.	2:45 p.m.
Leeds	7:31 p.m.	7:35 p.m.

Ron's watch shows the time he arrives at the station.



Which train could he be catching?
Explain how you know.

I slept from 8 p.m. to 8 a.m.

Dora

I slept from 8 a.m. to 8 p.m.

Teddy

Who is more likely to be correct?
Explain how you know.

Guided Reading

We are going to continue reading Greek myths with the story of [Theseus and the Minotaur](#).

Monday – Language

Read the story. Can you use a dictionary to find the meaning of the words highlighted in yellow?



Tuesday – Retrieval

1. What did Minos build inside his palace?
2. What did Minos demand for the king to send him every year?
3. What will Minos do if the king did not give him what he wanted?
4. How did Theseus defeat the Minotaur?
5. How did Theseus find his way out of the labyrinth?



Wednesday – Summarise

Can you summarise each paragraph into one sentence?



Thursday – Inference

Think about these 3 points in the story.

- Ariadne watching to Theseus
- Ariadne listening to her father taunt Theseus
- Ariadne helping Theseus with a ball of string



How did Ariadne feel at each point? How do you know?

Friday – Predict

What do you think happened next? Write the ending to the story.



Spelling	Handwriting
<p>This week we are looking at homophones – words which sound the same but are spelt differently and have different meanings.</p> <ol style="list-style-type: none"> 1. not/knot 2. ball/bawl 3. plain/plane 4. whether/weather 5. scene/seen 6. male/mail <p>Can you explain the difference between each word in the pair?</p> <p>Year 3 & 4 spelling words:</p> <ol style="list-style-type: none"> 1. sentence 2. separate 3. special 4. straight 5. strange 	<p>This week, we are practising forming capital letters.</p> <p>Practise writing out these letters then use them in words.</p> <p>Which words always need capital letters?</p> <p>A B C D E F G</p> <p>H I J K L M N</p> <p>O P Q R S T</p> <p>U V W X Y Z</p>

English (Writing)

This week our writing will be focusing on Theseus and the Minotaur.

Monday – Your task is to design your own palace like Minos and write 5 sentences to describe it using WOW adjectives.

Challenge: Can you include commas in a list?

Tuesday – Can you find the [mistakes](#) in the extract? Look out for punctuation (CL . ' "" ? !) and spelling errors.

Challenge: Improve the dialogue with words better than 'said' e.g. exclaimed, whispered.

Wednesday – An expanded noun phrase is a phrase made up of a noun and at least one adjective. E.g. Brave, confident Theseus marched down the labyrinth towards the mighty, strong Minotaur.

Choose one character from the story e.g. Theseus, King Minos or Ariadne and write 5 sentences using expanded noun phrases to describe your character.

Challenge: Can you add a post modifier too?

Brave, confident Theseus with a sharp sword.

Thursday – Create a [storyboard](#) to retell the story.

Draw a picture and write a short sentence below each picture.

Challenge: Think of an opener to begin each section e.g. Long ago, Suddenly, Tiptoeing down the stairs,

Friday – Imagine you are Theseus and you are about to face the Minotaur. How do you feel? What help do you need? Write a diary entry to explain your feelings.

Try and include:

- Expanded noun phrases
- Adjectives to talk about how you are feeling
- Similes (like/as)
- Time and place openers (After the fire, At night, In the dark woods)
- Subordinating conjunctions (while, if, after, before, because)

Topic/Science

Science – Forces and Magnets

This week, we are focusing on FRICTION.

Watch the [video](#) below and read the information. Have a go at the quiz at the end of the page.

What have you learned?

What did you already know?

Topic

Research facts about Greek gods. [This website](#) has some useful information.

Choose one Greek god and write a character profile about them. You can set your character profile out like the example below:

Greek Gods	
<h3>Aphrodite</h3> <p>Aphrodite was the goddess of _____</p> <p>Draw a picture of Aphrodite.</p> <p>She was daughter of _____</p> <p>_____</p>	<h3>Hades</h3> <p>Hades was _____</p> <p>were his brothers.</p> <p>Draw a picture of Hades.</p> <p>_____</p> <p>He wore _____</p> <p>He also had _____</p> <p>who guarded the Underworld.</p> <p>_____</p>
<h3>Hermes</h3> <p>Hermes was _____</p> <p>He wore _____</p> <p>Draw a picture of Hermes.</p> <p>_____</p> <p>Did You Know?</p> <p>Hermes invented _____</p> <p>Draw some boxing gloves.</p>	<h3>Athena</h3> <p>Athena was _____</p> <p>Her symbol was _____</p> <p>Draw a picture of Athena.</p> <p>_____</p> <p>Did You Know?</p> <p>Athena didn't have _____</p> <p>_____ She was born _____</p>

Greek Gods	
<h3>Aphrodite</h3> <p>Aphrodite was the goddess of _____</p> <p>Draw a picture of Aphrodite.</p> <p>She was daughter of _____</p> <p>_____</p>	<h3>Hades</h3> <p>Hades was _____</p> <p>were his brothers.</p> <p>Draw a picture of Hades.</p> <p>_____</p> <p>He wore _____</p> <p>He also had _____</p> <p>who guarded the Underworld.</p> <p>_____</p>
<h3>Hermes</h3> <p>Hermes was _____</p> <p>He wore _____</p> <p>Draw a picture of Hermes.</p> <p>_____</p> <p>Did You Know?</p> <p>Hermes invented _____</p> <p>Draw some boxing gloves.</p>	<h3>Athena</h3> <p>Athena was _____</p> <p>Her symbol was _____</p> <p>Draw a picture of Athena.</p> <p>_____</p> <p>Did You Know?</p> <p>Athena didn't have _____</p> <p>_____ She was born _____</p>

Art/DT

Have a go at drawing or design your own Greek temple. Use the images below to help you.



German

This week, we will be learning about weather.

Can you match the correct word to the picture?

Pair the weather expressions up with the pictures! Can you do an action for each one?



















Es ist heiß. Die Sonne scheint.
Es ist kalt.

Es schneit.

Es regnet.

	<p>PSHE</p> <p>Father's day is on the 21st June. Father's Day is celebrated worldwide to show appreciation to fathers, brothers, uncles and granddads. Write an acrostic poem to celebrate Father's day.</p>
Exercise/PE	Wellbeing
<p>Make sure you are keeping up with your daily exercise- it's so important for your physical and mental health.</p> <ul style="list-style-type: none"> • Disney 10 Minute Shakeups • Super Movers • #ThisIsPE  • PE with Joe Wicks • Indoor Activities for Kids • Get involved in this 'Take Action, Get Active' initiative for Mental Health Awareness week 	<p>Often, we can think negatively about a situation. This can make us feel sad and not have a good day. However, we can turn this negative thought into a positive thought to help us feel better.</p> <p>E.g. NEGATIVE: I am not good at spellings because I only got 16/20.</p> <p>POSITIVE: I got 16 spellings correct! I am trying hard with my spellings and challenging myself to get better.</p> <p>Have a look at the negative thoughts below and see how you can turn them into positive thoughts.</p> <div style="border: 1px solid black; padding: 5px; margin: 10px 0;"> <p>I am not good at maths because I only got 16 out of 20 correct in my test.</p> </div> <div style="border: 1px solid black; padding: 5px; margin: 10px 0;"> <p>I don't want to move house as I won't make any new friends and I will be lonely.</p> </div>
Additional Resources and Activities	
<p>Remember to keep up-to-date with your times tables by logging onto TTrockstars </p> <div style="display: flex; align-items: center;">  <div style="margin-left: 10px;"> <p>What is Classroom Secrets Kids? A brand new site from Classroom Secrets packed full of activities for children to use independently.</p> </div> </div> <p>The government have released a long list of resources to access work at home.</p> <p>We recommend:</p> <div style="display: flex; align-items: center;"> <p>Twinkl Home Learning Hub, which has lots of activities for all subjects.</p>  </div> <div style="display: flex; align-items: center; margin-top: 10px;">  <p>BBC Bitesize has loads of handy revision videos and lessons.</p> </div> <p>There are plenty of resources available for all ages on Purple Mash. All the children in school should have their login details with them at home if you do not you will need to email your class teachers using the school email address you have been sent.</p> <div style="display: flex; align-items: center; margin-top: 10px;">  <p>Oak National Academy has lots of video lessons for different subjects in every year group.</p> </div>	

Messages

Hi again year 3!

It's a shame it's been raining this week but we're sure the ducks and plants are enjoying it!

Answer to last week's riddle:

Q- Which word is spelt wrong in the dictionary? Wrong!



This week's riddle:

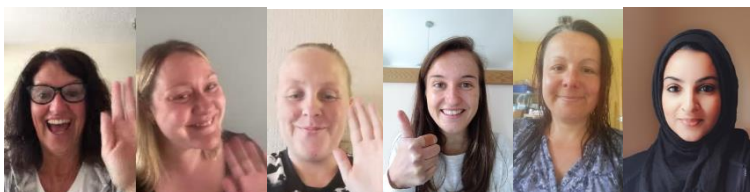
Q- What begins with E but only has one letter?



Have a great week and keep up the hard work. We hope you're finding lots of fun activities to do too. Remember to email any questions or work for us to see into...

dh.y3homelearning@perryhallmat.co.uk

Love from us all!



Mrs McKenzie Miss Merchant Miss Burton Miss Vaughan Miss Wolf Miss Ali